





It's Worth Reading

Worth Elementary | 11158 S. Oak Park Ave. Worth, IL 60482 | www.worthschools.org

<p>Important Dates April</p>	<p> A LETTER FROM THE PRINCIPAL - APRIL </p>
<p>April</p> <p>Apr 1 – Students return from Spring Break</p> <p>Apr 2 – IAR Testing Begins</p> <p>Apr 10 - Board of Ed Mtg May breakfast/ Lunch menus released</p> <p>Apr 15 - ISA testing begins - Gr 5 Parent Registration help night @ 4:30</p> <p>Apr 20 - May breakfast /Lunch online orders are due</p> <p>Apr 25 - Early Dismissal Day- 1:30 Dismissal</p> <p>Apr 26 - Teacher Institute Day - No Student Attendance</p> <p>May</p> <p>3: Candor Health student presentation (Gr 5 only)</p> <p>6: Fastbridge Window Opens</p> <p>8 - Board of Ed Mtg</p> <p>16 – Spring Band concert @ WJH</p>	<p>Dear Worth Elementary Families,</p> <p>Once again, the year at Worth Elementary has passed with incredible speed! It seems impossible to be planning field day activities and different end of the year events, while still only in March / April.</p> <p>Remaining Early Release Days Our remaining early dismissal days for the year will occur on April 25, and May 24. WJH will dismiss at 1:20 and WE / WW dismiss at 1:30. Bus companies have been informed of the changes to the schedule. If you pick up your student, please arrive by 1:30. Please see our website for more information:</p> <p>Assessments and Surveys The next assessment to be administered is the Illinois Assessment of Readiness for students in grades 3-5, and the Illinois Science Assessment for Gr 5. IAR will be administered April 2-8 and ISA (Gr 5 only), will be administered April 15-17. The best preparation for these important assessments is a good night’s sleep and a healthy breakfast.</p> <p>Outdoor Recess and PE In clear weather, students go outside for recess. If it is cold and they do not have coats with them, they may be asked to stay indoors. For weather and safety purposes, students should not wear crocs to school. Students who wear crocs may be asked to stay indoors for recess (if the ground is wet) and will sit during PE.</p> <p>Bark Bite Assemblies / Universal Expectations Students are getting excited for the end of the school year. Please ask them about our school’s universal expectations for behavior and how they can finish out the year strong! The End of Year activities schedule will be announced soon.</p> <p>Parent Communication We ask that all parents enroll in our district communication platform, School Messenger, as we utilize this regularly to communicate important information with parents. Most contact information should have been updated during the registration process. If you have recently changed your contact information, or you would like to check, you may follow the instructions listed on the district website: https://worthschools.org/parents/communication/</p> <p>Safety Measures / Sick Protocol Please note that all students must be symptom free for 24 hours prior to returning to school. This includes being fever and vomit free.</p>

**May 24 - Early
Dismissal Day- 1:30
Dismissal**

30- WJH Graduation
ceremony

Meal Ordering

Families must pre-order breakfasts and lunches. If you are in need of assistance with ordering, please call the Nutrition Hotline at 708-671-3903. Meal ordering information is now available on the district website: <https://worthschools.org/parents/meal-program/>

Arrival & Dismissal Procedures

Worth Elementary doors open in the morning at 8:15am. Students should not arrive on campus until 8:15 as there is no supervision prior to this time. Students are expected to be in their seats, ready to learn at 8:30am. Arrival after 8:30 is considered tardy and parents will need to sign in their students at the main office.

Students who order breakfast will proceed to the MPR to collect breakfast.

Car Riders: Driving parents should use the car lane for arrival and dismissal. Parents on foot may not collect their students from the car lane. Students of all ages may use the car lane. Car riders enter the building from the car lane and will be dismissed into the car lane. Although traffic can back up, the line moves quickly. Student dismissal takes approximately 8 minutes from start to finish.

The North doors are used to dismiss walking students. The North lot has been designated as an **employee lot**. Neighboring homeowners and businesses have contacted us regarding unauthorized parking in lots and driveways. Please be courteous to our neighbors by respecting private properties.

We wish you a wonderful month filled with the sights and sounds of Spring!

Sincerely,



Maureen Eichstaedt
Worth Elementary Principal



Mrs. Elizabeth D'Andrea
Worth Elementary Assistant Principal

Daily Student Schedule

Grades 1-5

8:30 a.m. - 3:15 p.m.

Kindergarten

AM: 8:30 - 11:30 a.m.

PM: 12:15 - 3:15 p.m.

EC / PreK

AM: 8:30 - 11:00 a.m.

PM: 12:45 - 3:15 p.m.

Attendance

Attendance will be taken at **8:30 a.m.** for ALL students.

A Note About Absences

If your child will not be at school for any reason, please call school to let us know. You can call the absentee hotline at **708-671-5859**, 24 hours a day and leave a message. You can also contact our main office at **708-448-2801**.

We appreciate your partnership in educating students and keeping them safe!

Gr 4-5 doors

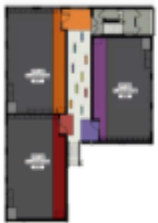
FINISH FLOOR PLANS

**Employee
Parking
Lot**



Gr 1-3 Meeting Point

MAIN FLOOR PLAN



LOWER FLOOR PLAN

