



News From the 'Woods

Worthwoods Elementary | 11000 S. Oketo, Worth, IL 60482 | www.worthschools.org

Important Dates	A Letter from the Principal – December 2024
<p>Important Dates:</p> <p>Dec 4 - January Meal Ordering Opens</p> <p>Dec 5 - WJH Band Performance</p> <p>Dec 6 - Early Dismissal @ 1:30 / No Kindergarten Classes</p> <p>Dec 11 - Worth Board of Ed Meeting @ 6:00</p> <p>Dec 13 - January Meal Ordering Closes</p> <p>Dec 18 - WW Winter Choir Concert @ 4</p> <p>Dec 20 - Early Dismissal @ 1:30 / NO Kindergarten Classes Today</p> <p>Dec 23 - Jan 3 - Winter Break / No School</p> <p>Jan 6 - Students Return from Winter Break</p>	<p>Dear Worthwoods Families,</p> <p>December is really flying by! We hope that all of our families were able to enjoy some time together during the Thanksgiving holiday break. It was great to see so many of our parents at Parent Teacher Conferences too! Our students and teachers have been working really hard in their classroom learning each day and our teachers love having the opportunity to share this growth with you. They are doing an amazing job! We can't wait to see how much they grow this school year. Can you believe that it's almost winter break? Students will have the chance to participate in fun winter activities the week leading up to break as well as a spirit week hosted by our Student Council. As we move into the winter months, please make note of the following reminders/updates!</p> <p>Weather</p> <p>Please be mindful of the daily temperature as students will be going outside for recess each day (weather permitting). We ask that students dress appropriately to ensure they are warm outside. As we move into the winter months, this includes hats, gloves, and scarves!</p> <p>Chromebooks</p> <p>Students in grades 1-5 will begin bringing home Chromebooks each weekend and/or on days where the forecast is calling for inclement weather. Chromebooks do not need to be used unless E-Learning is implemented. Students should come back to school with a charged Chromebook.</p> <p>Traffic</p> <p>Safety is our first priority when considering traffic during pick-up and drop-off! Please note that cars are not permitted to park on Oketo and parents/students should not be getting in or out of cars on the street. Also, please be mindful of the crossing guard and follow directions given. Please be patient. Cars are not allowed to pass other cars while waiting. This creates a serious safety concern.</p> <p>Curriculum</p> <p>Reading: Our students and teachers have been working hard implementing our new reading curriculum Wit and Wisdom. When you are at home reading, ask your child what is something they notice and what is something they wonder? They have been having some really rich academic conversations in their classroom with noticing and wonders.</p> <p>SEL: Unit 2: Managing Emotions</p> <p>Technology</p> <p>Please remind your child what they are doing on their computer at school is monitored. Inappropriate use of technology</p> <p>Remind your child what they are doing on their computer at school is monitored. Inappropriate technology use will result in losing their privilege of having a device.</p>

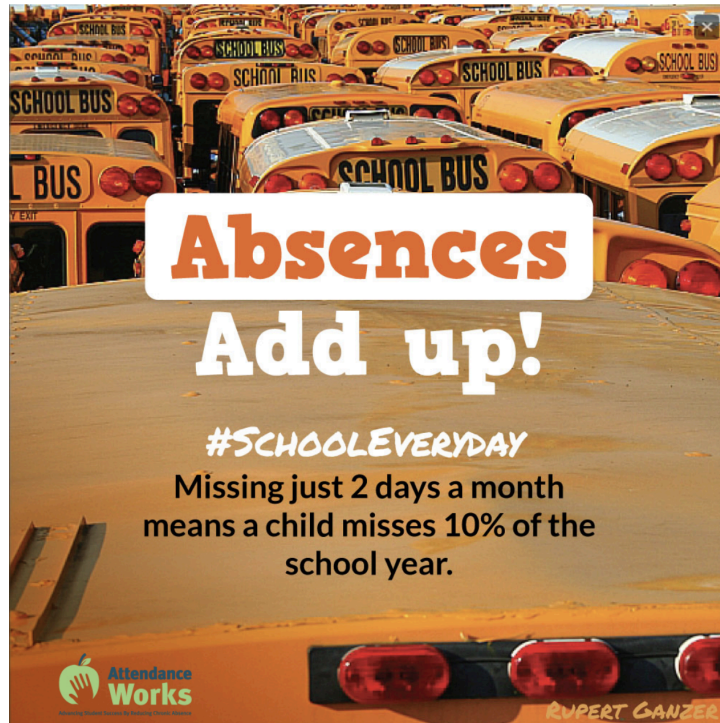
Meal Ordering

Parents and guardians need to pre-order breakfasts and lunches for students grades 1-5. If you did not order for September, please make sure your child eats breakfast and packs a lunch daily. Information on ordering can be found on our district website: <https://worthschools.org/parents/meal-program/>
Meal ordering for January is due December 13th.

Parent Communication

We ask that all parents enroll in our district communication platform, School Messenger, as we utilize this regularly to communicate important information with parents. If you have recently changed your contact information, or you would like to check, you may follow the instructions listed on the district website: <https://worthschools.org/parents/communication/>

Attendance



Absences / Sick Protocol

As colder weather is upon us, and more students getting sick, please note that all students must be symptom free for 24 hours prior to returning to school. This includes being fever and vomit free. If your child is absent, please call the office prior to 8:30 AM. All absences MUST be reported.

Please refer to Worth School District 127's web page at www.worthschools.org for all other information. We always welcome parents to reach out with additional questions or concerns!

Sincerely,

Ms. Ashley Toms Bonnstetter
Worthwoods School Principal

Mrs. Alyse Koehler
Worthwoods School Assistant Principal

Important Parent Information

Daily Student Schedule

Grades 1-5
8:30 a.m. - 3:15 p.m.

Kindergarten
AM: 8:30 - 11:30 a.m.
PM: 12:15 - 3:15 p.m.

Kindergarten students were enrolled in sessions based on availability at the time of registration.

Phone Information

School Messenger - Worth School District uses an automated telephone system to email and call parents with important information, updates, and information regarding emergency school closings.

Calls are made to the phone number designated by the parent/legal guardian.

Please make sure the school always has your most up-to-date phone number and email.

District Website - www.worthschools.org

Worthwoods Main Office Phone - 708-448-2802

Attendance

Attendance will be taken at 8:30 a.m. for ALL students.

P.M. Kindergarten will take attendance at 12:15 p.m.

Please call the office to report any absences or late arrivals.

If your child is sick, please call the
ABSENCE HOTLINE
708-671-5899

The Absence Hotline answering machine is on 24 hours per day.

Meal Ordering

Meal orders are available for grades 1-8 only. No meals will be provided for K.

If you are in need of assistance with ordering, please call the Nutrition Hotline at 708-671-3903.

Meal ordering information is now available on the district website:

<https://worthschools.org/parents/meal-program/>

Late Arrivals / Early Dismissals

Students who are late for school must be signed-in by school personnel.

Students leaving early from their regularly scheduled school day will need to be signed out in the office.

The designated pick-up person will need to

District 127 Early Dismissal Days

provide a government issued ID to be scanned and returned before the school will release the student for dismissal.

Please call the office to let us know you will be picking up early.

Dear Parents/Guardians:

I hope your child's 2024/2025 school year is off to a great start. This letter is an **essential reminder** of early dismissal dates for staff Professional Development and school improvement. Please review the table below and make special note if your child is in Early Childhood, Pre-K, or Kindergarten.

- **Early Childhood** will not attend in person but will have remote instruction.
- **Pre-K** is not in session for all early dismissal dates.
- **AM and PM Kindergarten** will **alternate attending AM** in person except on December 20.
 - Kindergarten is not in session on December 20.

Date	EC	Pre-K	Kindergarten	1-5, WW/WE	WJH
Friday, September 27	Remote	Not in session	AM: 8:30-11:30 PM: Not in session	1:30 Dismissal	1:15 Dismissal
Friday, November 1	Remote	Not in session	AM: Not in session PM: 8:30-11:30	1:30 Dismissal	1:15 Dismissal
Friday, December 6	Remote	Not in session	AM: 8:30-11:30 PM: Not in session	1:30 Dismissal	1:15 Dismissal
*Friday, December 20	Remote	Not in session	NOT IN SESSION	1:30 Dismissal	1:15 Dismissal
Friday, February 14	Remote	Not in session	AM: Not in session PM: 8:30-11:30	1:30 Dismissal	1:15 Dismissal
Thursday, April 17	Remote	Not in session	AM: 8:30-11:30 PM: Not in session	1:30 Dismissal	1:15 Dismissal
Friday, May 23	Remote	Not in session	AM: Not in session PM: 8:30-11:30	1:30 Dismissal	1:15 Dismissal

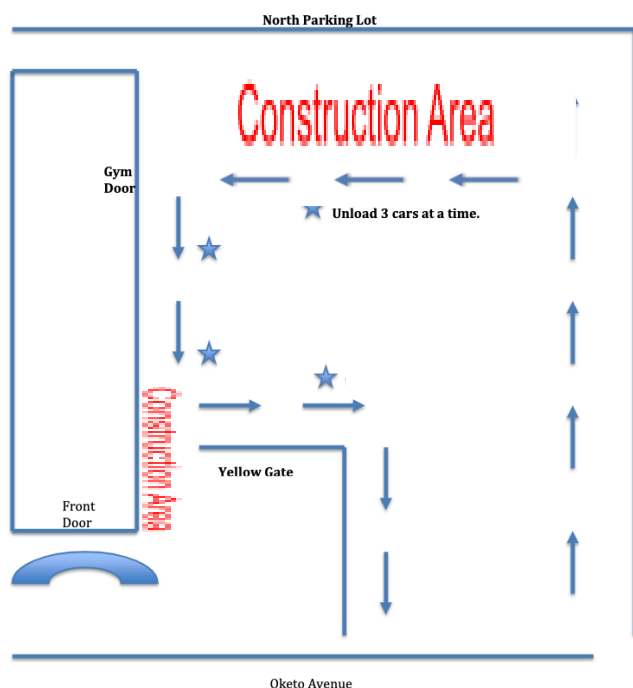
*Staff are dismissed after student dismissal—no Professional Development.

Please contact your child's building principal with questions or concerns regarding early dismissal dates.

Drop-Off / Pick-Up Procedures

Arrival @ 8:15 - 8:30 AM

- Grades 1-5 and AM K: Gym Doors
- PM K: Door 1, front door of the building
- Follow the circular pattern towards the back of the north parking lot.
- All students will enter the **Gym doors** starting at 8:15.
- Students should exit from the **passenger side** of the car only.
- Pull as far forward as possible to allow 3-4 cars to unload at one time.



Dismissal @ 3:15

- Grades K-2: Door 1, front door
- Grades 3-5: Gym doors
- Plan to arrive between 2:55 - 3:10 as we **close** the parking lot at **3:12**.
- **Back into a parking spot** or line up in rows at the back of the parking lot.
- The parking lot will reopen once all children have safely cleared the area.
- Cars will be dismissed from front to back.

