

WORTH SCHOOL DISTRICT 127

WORTHWOODS ELEMENTARY SCHOOL | 11000 SOUTH OKETO AVENUE, WORTH, IL 60482 | 708-448-2802



Dear Worthwoods Parents/Guardians,

We are so excited, once again, to have students come into the building starting on February 8! With every new opening this year, we have tried to make changes to improve the delivery of instruction for our students. Starting February 8th:

- Students in grades 1-8 will have live instruction from 8:30-12:30, Monday through Friday.
- After lunch at home, students will have 1 remote hour of instruction which will be a combination of live instruction + independent work with one of their specials teachers.
- Students will have 1 live special Meet each day - P.E., Art, Music, Library, or Tech. To accommodate all classes, this Meet may be scheduled anywhere between 1:20-3:00.
- Students in our EC, Pre-K, and Kindergarten classes will have live instruction 4 days a week - Monday, Tuesday, Thursday and Friday. The hours for the AM session will be 8:30-11:00 and the hours for the PM session will be 12:30-3:00. Kindergarten teachers will host a 30 minute live Meet on Wednesdays (morning and afternoon) along with posting activities from their specials teachers. Students will also have a live Meet scheduled with their P.E. teacher.
- Meal pick up will be at the gym doors on Tuesdays from 12:00-1:00. We will continue 7-day meal packs with a gallon of milk.
 - All meals must be picked up at the gym doors. Meals will not be delivered to the classrooms for students to carry home.
 - Meal pick up time and student dismissal time purposely overlap. If you are a remote learning family you may want to arrange to pick up meals at 12:00 in order to avoid dismissal traffic.
 - The lot will close at 12:28 and will not reopen until all students are safely in their cars.
 - Once the lot has been cleared, cars will once again have access to in and out meal pick up.

Many things will remain the same:

- Students should have their self-certification forms filled out, dated, signed, and **in their hands** as they exit their vehicles. This will help us unload cars as quickly as possible.
- We will give newly returning students their own pad of self-certification forms. For the first day, you may print a form from the district website.
- Face masks must be worn by everyone in school and on school property at all times.
- Everyone will need to practice social distancing.
- Attendance will be taken for all students at 8:30 a.m. If your child will not be attending or will be absent from class, please call the school office. You will receive a call, text and/or email from the school if your child is not called in for an absence.

All of this information is summarized in the attached, easy-to-read infographic.

Please know how much we appreciate your never-ending support and continued patience. Please contact your child's teachers, Ms. Toms, or me with any questions or refer to Worth School District 127's web page at www.worthschools.org for all other information.

Respectfully,

Linda Esposito, Principal

Ashley Toms, Assistant Principal

WW Return to Learn - February 8, 2021

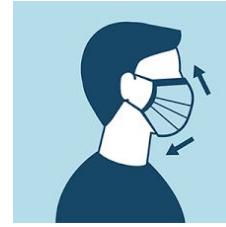
What to Know

Students must have their self-certification form completed in order to enter the school building daily.



If students are feeling sick, they **need** to stay home.

Face masks need to be properly worn at all times by all persons on school property.



Individuals **without** masks will be asked to put one on while on school grounds.

Students should arrive at school **no earlier** than 8:15 a.m.

Attendance for ALL students will be taken at 8:30 a.m.



Everyone will need to practice social distancing, as much as possible, while on school property.



Students will remain in the same desk in the same classroom except for individually needed circumstances.

All students in grades 1-8 will have class from 8:30-12:30, Mon - Fri.

After lunch, students will have **1 remote hour** of instruction which will be a combination of live instruction + independent work with one of their specials teachers.



EC, Pre-K, and Kdg will meet M, T, Th, F, from 8:30-11:00 for the AM session and 12:30-3:00 for the PM session.

Meal pickup will be at the gym doors on **Tuesday from 12:00 - 1:00 p.m.**

*Note: The parking lot will be closed from 12:30-12:40 for student dismissal.

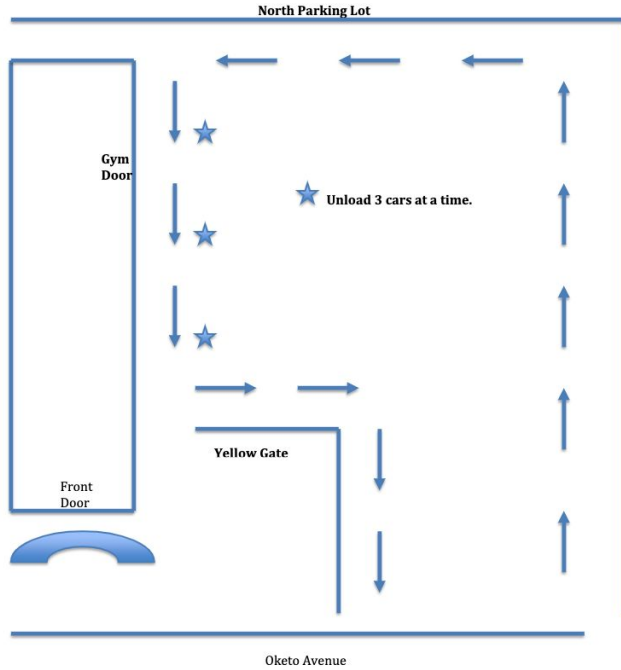


Lunches will **not** be delivered to classrooms for the students to take home.

Parking Lot Procedures

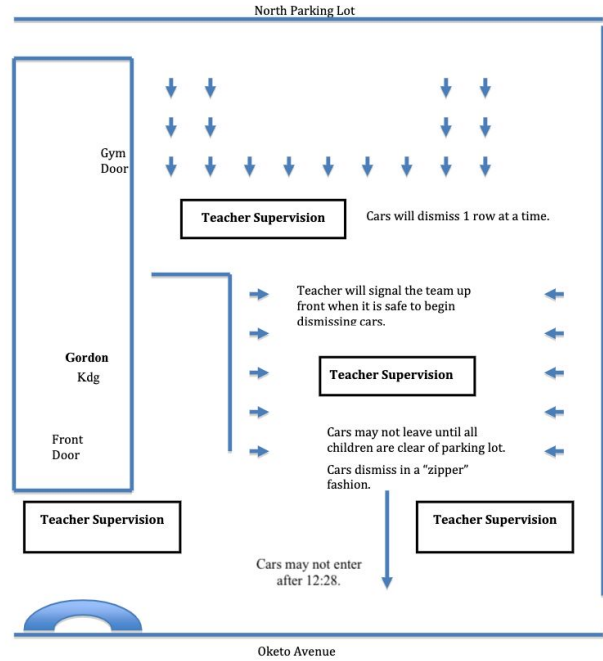
Arrival: 8:15 - 8:30 a.m.

- Follow the circular pattern towards the back of the north parking lot.
- All students will enter the **Gym doors** starting at 8:15.
- Students should exit from the **passenger side** of the car only.
- Pull as far forward as possible to allow 3-4 cars to unload at one time.



Dismissal: 12:30 - 12:40 p.m.

- Plan to arrive between 12:15 - 12:25 as we **close** the parking lot at **12:28**.
- **Back into a parking spot** of line up in rows at the back of the parking lot.
- The parking lot will reopen once all children have safely cleared the area.
- Cars will be dismissed from front to back.



Class Sizes - As of 2/2/21

Kindergarten	AM	
	Remote	In-Person
K-Gordon	5	14
Kindergarten	PM	
	Remote	In-Person
K-Gordon	7	12

***All class size counts are subject to change.*

WW Grades 1-5	Remote	In Person
1-Paraskevopoulos	12	12
1-Hildebrand	3	19
Totals	15	31
2-Machaj	5	22
2-Dennis	7	19
Totals	13	41
3-Flanagan	6	14
3-Socha	10	10
Totals	16	24
4-Young	12	12
4-Pagano	8	15
Totals	20	27
5-Hope	8	15
5-Fisher	9	14
Totals	17	29

COPY OF HEALTH SELF-CERTIFICATION FORM



STUDENT HEALTH SCREENING CERTIFICATION FORM (COVID-19)

Students must present an updated form ***each school day***
to enter the school building

STUDENT'S NAME: _____ **GRADE:** _____ **DATE:** ___ / ___ / ___

HOMEROOM TEACHER: _____

NOTE: When completing this form, focus on new or unexpected symptoms (e.g., a chronic cough is different than a new cough).

1. A measured temperature greater than 100.3 degrees?	<input type="checkbox"/> YES	<input type="checkbox"/> NO
2. Fever or feeling feverish (chills, sweating), new cough, sore throat, muscle aches or body aches, vomiting or diarrhea, new loss of taste or smell, chills, fatigue, new or unusual headaches, congestion (not allergy-related), or runny nose?	<input type="checkbox"/> YES	<input type="checkbox"/> NO
3. Has had "close contact" with an individual diagnosed with COVID-19? Close contact means being within six feet of an infected person for fifteen minutes or more; having direct physical contact with an infected person; sharing eating or drinking utensils with an infected person; and/or being directly exposed to respiratory droplets of an infected person.	<input type="checkbox"/> YES	<input type="checkbox"/> NO
4. Been asked to self-isolate or quarantine by a doctor or local public health official?	<input type="checkbox"/> YES	<input type="checkbox"/> NO
5. Was recently tested for COVID-19 or are awaiting the results of a COVID-19 test?	<input type="checkbox"/> YES	<input type="checkbox"/> NO

If any questions were answered with a "YES," then keep the child at home. **DO NOT SEND CHILD TO SCHOOL.**
Call the school attendance line to report absence and indicate reason as "failed health screening."

PARENT SIGNATURE VERIFYING RESPONSES TO QUESTIONS: _____